

# SMD CORES

**OWA4~OWA10**

---

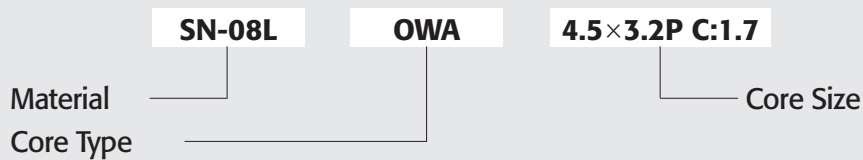
**OWC5~OWC6**

---

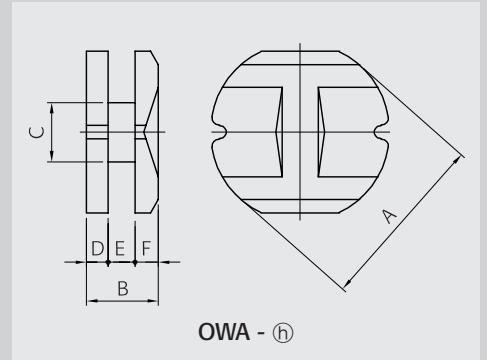
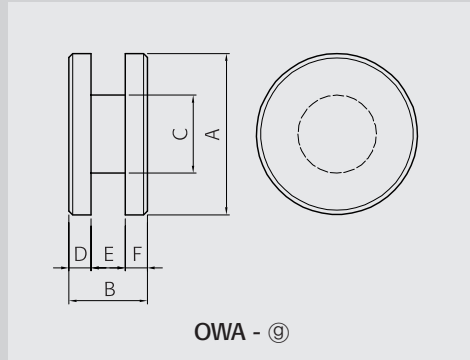
**DSC12**

---

Ordering Code System



# OWA, OWC, DSC CORES



Dimensions in mm

Part No.	Type	A	B	C	D	E	F
OWA4.55x2.2 C:2.1	OWA - (g)	4.55 $^{+0.00}_{-0.15}$	2.20 $\pm 0.10$	2.10 $\pm 0.10$	0.50 $\pm 0.10$	1.20 $\pm 0.10$	0.50 $\pm 0.10$
OWA5.4x1.0 C:2.8	OWA - (g)	5.40 $^{+0.00}_{-0.25}$	1.00 $\pm 0.10$	2.80 $\pm 0.10$	0.35 $\pm 0.05$	0.30 $\pm 0.05$	0.35 $\pm 0.05$
OWA5.4x2.45 C:2.5	OWA - (g)	5.40 $^{+0.00}_{-0.25}$	2.45 $\pm 0.10$	2.50 $\pm 0.10$	0.50 $\pm 0.10$	1.45 $\pm 0.10$	0.50 ref.
OWA5.8x4.5P C:2.8	OWA - (h)	5.80 $\pm 0.15$	4.50 $\pm 0.15$	2.80 $\pm 0.15$	1.00 ref.	2.30 $\pm 0.10$	1.20 $\pm 0.10$
OWA7.8x3.5P C:2.4	OWA - (h)	7.80 $\pm 0.15$	3.50 $\pm 0.10$	2.40 $\pm 0.10$	0.80 ref.	1.50 $\pm 0.10$	1.20 $\pm 0.10$
OWA7.8x5.0P C:2.8	OWA - (h)	7.80 $\pm 0.15$	5.00 $\pm 0.15$	2.80 $\pm 0.15$	1.00 ref.	2.60 $\pm 0.10$	1.40 $\pm 0.10$
OWA10x5 C:5.0	OWA - (g)	9.85 $\pm 0.10$	5.00 $\pm 0.15$	5.00 $\pm 0.10$	0.95 $\pm 0.10$	3.10 $\pm 0.10$	0.95 ref.
OWA10x7 C:5.1	OWC	5.90 $\pm 0.10$	0.90 $\pm 0.10$	4.65 $\pm 0.10$	4.90 $\pm 0.10$		
OWC5.9x1-4.65H	OWC	5.90 $\pm 0.10$	1.60 $\pm 0.10$	4.65 $\pm 0.10$	4.90 $\pm 0.10$		
OWC5.9x1.6-4.65H	OWC	5.90 $\pm 0.10$	1.90 $\pm 0.10$	4.65 $\pm 0.10$	4.90 $\pm 0.10$		
OWC5.9x1.9-4.65H	OWC	6.80 $\pm 0.10$	2.40 $\pm 0.10$	5.50 $\pm 0.10$	6.00 $\pm 0.10$		
DSC12x3.0-10.7H	DSC	12.10 $\pm 0.20$	12.10 $\pm 0.20$	3.00 $\pm 0.15$	10.70 $\pm 0.20$	5.50 ref.	0.65 ref.
DSC12x3.5-10.7H	DSC	12.10 $\pm 0.20$	12.10 $\pm 0.20$	3.50 $\pm 0.15$	10.70 $\pm 0.20$	5.50 ref.	0.65 ref.
DSC12x5-10.7H	DSC	12.10 $\pm 0.20$	12.10 $\pm 0.20$	4.90 $\pm 0.15$	10.70 $\pm 0.20$	5.50 ref.	0.65 ref.
DSC12x7-10.7H	DSC	12.10 $\pm 0.20$	12.10 $\pm 0.20$	6.90 $\pm 0.15$	10.70 $\pm 0.20$	5.50 ref.	0.65 ref.

