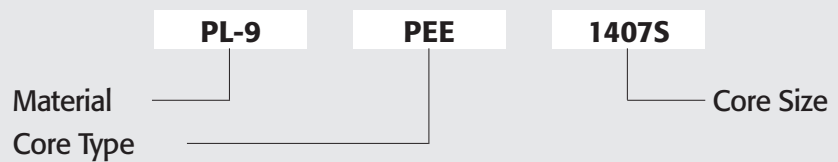


PLANAR CORES

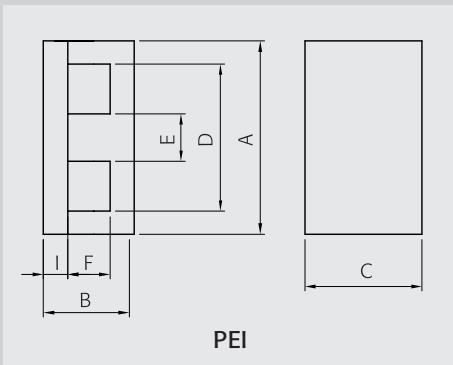
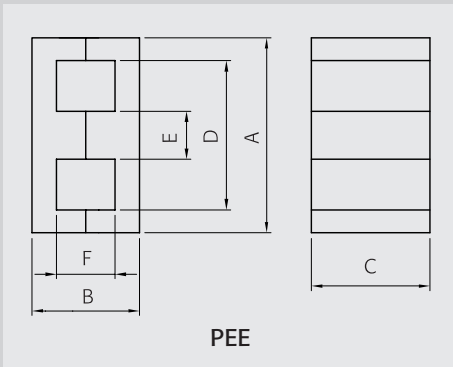
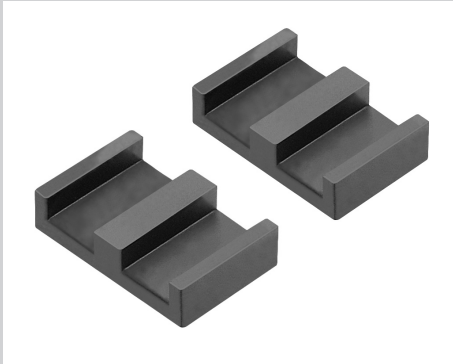
PEE14~PEE58

PEI14~PEI58

Ordering Code System



PLANER CORES



Part No.		PEE1407S	PEE1808S	PEE2211S	PEE3213S
Type		PEE	PEE	PEE	PEE
Dimensions in mm	A	14.00 ±0.30	18.00 ±0.35	21.80 ±0.40	31.75 ±0.64
	B	7.00 ±0.20	8.00 ±0.20	11.40 ±0.20	12.70 ±0.26
	C	5.00 ±0.10	10.00 ±0.20	15.80 ±0.30	20.32 ±0.41
	D	11.00 ±0.25	14.00 ±0.30	16.80 ±0.40	24.90 min.
	E	3.00 ±0.05	4.00 ±0.10	5.00 ±0.10	6.35 ±0.13
	F	4.00 ±0.20	4.00 ±0.20	6.40 ±0.20	6.36 ±0.26
	I				

Core Set Parameters					
	C1(mm ⁻¹)	1.430	0.616	0.414	0.323
	Le(mm)	20.7	24.3	32.5	41.7
	Ae(mm ²)	14.5	39.5	78.5	129.0
	Ve(mm ³)	300	960	2550	5380
	Ac(mm ²)	14.5	39.5	78.5	129.0
	Aw(mm ²)	16.0	20.0	37.8	59.0
	W(g/set)	1.2	5	13	26.8

Electrical Characteristics ⁽¹⁾⁽²⁾						
Core loss	AL value	PL-7	1500	3400	5100	6500
		PL-9	1880	4250	6380	8170
		PL-11	1560	3540	5300	6760
		PL-13	2000	4530	6800	8710
		PL-15	1560	3540	5300	6760
		PL-F1	880	1980	2980	3810
	Core loss	PL-7	0.17	0.53	1.40	2.96
		PL-9	0.15	0.48	1.28	2.69
		PL-11	0.15	0.48	1.28	2.69
		PL-13	0.14	0.46	1.22	2.58
		PL-15	0.14	0.43	1.15	2.42
		PL-F1	0.04	0.12	0.31	0.65

Note : 1) Core loss

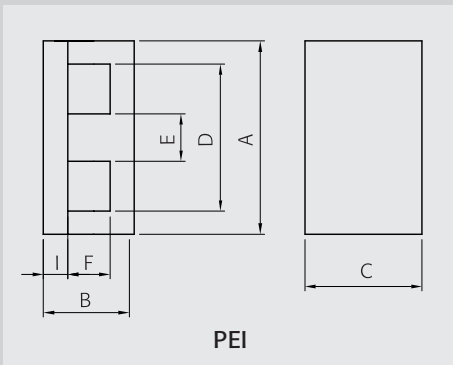
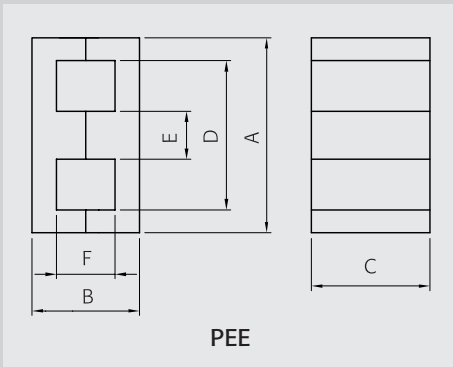
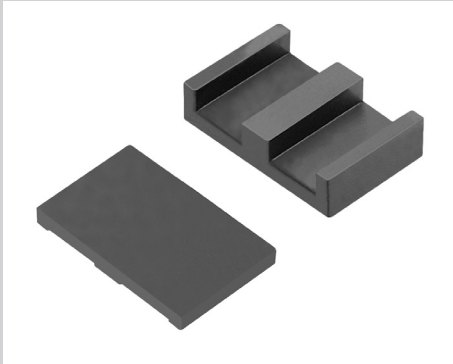
- Unit : Watt max.
- Measuring conditions
- PL-7, PL-11, PL-15 : 100kHz, 200mT, at 100°C
- PL-9, PL-13 : 100kHz, 200mT, at 80°C
- PL-F1 : 500kHz, 50mT, at 80°C

2) AL value

- Unit : nH/N²
- Measuring conditions : 1kHz, 0.1V, 23°C
- Tolerance : ±25%

	PEE3817S	PEE4319S	PEE5821S	PEI1405S	PEI1806S	PEI2208S	PEI3210S	PEI3812S	PEI4314S	
	PEE	PEE	PEE	PEI	PEI	PEI	PEI	PEI	PEI	
A	38.10 ±0.76	43.20 ±0.90	58.40 ±1.20	14.00 ±0.30	18.00 ±0.35	21.80 ±0.40	31.75 ±0.64	38.10 ±0.75	43.20 ±0.90	
B	16.52 ±0.26	19.00 ±0.26	21.00 ±0.26	5.00 ±0.15	6.00 ±0.20	8.20 ±0.15	9.53 ±0.26	12.07 ±0.25	13.60 ±0.25	
C	25.40 ±0.50	27.90 ±0.60	38.10 ±0.80	5.00 ±0.10	10.00 ±0.20	15.80 ±0.30	20.32 ±0.40	25.40 ±0.51	27.90 ±0.60	
D	30.23 min.	34.70 min.	50.00 min.	11.00 ±0.25	14.00 ±0.30	16.80 ±0.40	24.90 min.	30.23 min.	34.70 min.	
E	7.60 ±0.20	8.10 ±0.20	8.10 ±0.20	3.00 ±0.10	4.00 ±0.10	5.00 ±0.10	6.35 ±0.13	7.60 ±0.20	8.10 ±0.20	
F	8.90 ±0.26	10.80 ±0.26	13.00 ±0.26	2.00 ±0.10	2.00 ±0.10	3.20 ±0.10	3.18 ±0.20	4.45 ±0.10	5.40 ±0.13	
I				1.50 ±0.05	2.00 ±0.10	2.50 ±0.05	3.18 ±0.13	3.80 ±0.10	4.10 ±0.13	
C1(mm⁻¹)	0.272	0.276	0.268	1.16	0.514	0.332	0.278	0.226	0.226	
Le(mm)	52.6	61.7	81.2	16.7	20.3	26.1	35.9	43.7	50.8	
Ae(mm²)	194	225	305	14.5	39.5	78.5	129	194	225	
Ve(mm³)	10200	13900	24600	240	800	2040	4560	8460	11500	
Ac(mm²)	193	225	305	14.5	39.5	78.5	129	193	225	
AW(mm²)	100.7	143.6	272.4	8	10	18.9	29.5	50.4	71.8	
W(g/set)	52	71	124	1.1	4.3	11	21.7	43.3	59	
Al value	PL-7	7800	7700	7900	1800	4100	6400	7600	9300	9300
	PL-9	9710	9630	10270	2110	5130	8000	9500	11630	11630
	PL-11	8110	8010	8220	1870	4260	6660	7900	9670	9670
	PL-13	10350	10270	10950	2250	5470	8530	10130	12400	12400
	PL-15	8110	8010	8220	1870	4260	6660	7900	9670	9670
	PL-F1	4530	4490	4790	990	2390	3730	4430	5430	5430
	PL-F2	3240	3210	3420	710	1710	2660	3160	3880	3880
Core loss	PL-7	5.61	7.65	13.53	0.13	0.44	1.12	2.51	4.65	6.33
	PL-9	5.10	6.95	12.30	0.12	0.40	1.02	2.28	4.23	5.75
	PL-11	5.10	6.95	12.30	0.12	0.40	1.02	2.28	4.23	5.75
	PL-13	4.90	6.67	11.81	0.12	0.38	0.98	2.19	4.06	5.52
	PL-15	4.59	6.26	11.07	0.11	0.36	0.92	2.05	3.81	5.18
	PL-F1	1.22	1.67	2.95	0.03	0.10	0.24	0.55	1.02	1.38

PLANER CORES



Part No.		PEI5815S
Type		PEI
Dimensions in mm	A	58.40 ±1.20
	B	14.60 ±0.26
	C	38.10 ±0.80
	D	50.00 min.
	E	8.10 ±0.20
	F	6.50 ±0.13
	I	4.10 ±0.13

Core Set Parameters	C1(mm ⁻¹)	0.224
	Le(mm)	68.3
	Ae(mm ²)	305
	Ve(mm ³)	20800
	Ac(mm ²)	305
	Aw(mm ²)	136.2
	W(g/set)	106

Electrical Characteristics ⁽¹⁾⁽²⁾	AL value	PL-7	9400
		PL-9	12290
		PL-11	9780
		PL-13	13100
		PL-15	9780
		PL-F1	5740
	Core loss	PL-7	11.44
		PL-9	10.40
		PL-11	10.40
		PL-13	9.98
		PL-15	9.36
		PL-F1	2.5

Note : 1) Core loss

- Unit : Watt max.
- Measuring conditions
- PL-7, PL-11, PL-15 : 100kHz, 200mT, at 100°C
- PL-9, PL-13 : 100kHz, 200mT, at 80°C
- PL-F1 : 500kHz, 50mT, at 80°C

2) AL value

- Unit : nH/N²
- Measuring conditions : 1kHz, 0.1V, 23°C
- Tolerance : ±25%