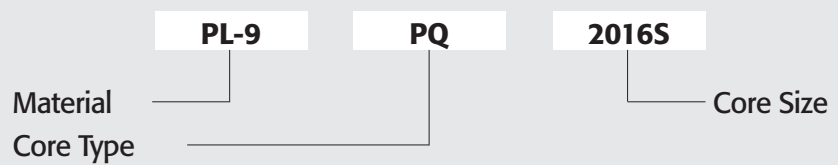


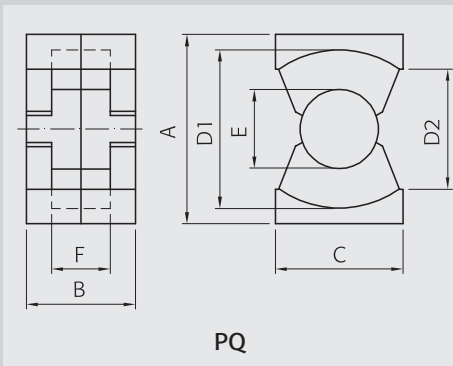
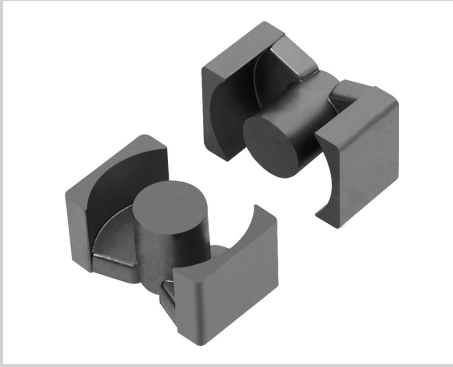
PQ CORES

PQ20~PQ50

Ordering Code System



PQ CORES



Part No.		PQ2016S	PQ2020S	PQ2620S	PQ2625S
Type		PQ	PQ	PQ	PQ
Dimensions in mm	A	20.50 ±0.40	20.50 ±0.40	26.50 ±0.45	26.50 ±0.45
	B	16.20 ±0.20	20.20 ±0.20	20.15 ±0.25	24.75 ±0.25
	C	14.00 ±0.40	14.00 ±0.40	19.00 ±0.45	19.00 ±0.45
	D1	18.00 ±0.40	18.00 ±0.40	22.50 ±0.45	22.50 ±0.45
	D2	12.00 min.	12.00 min.	15.50 min.	15.50 min.
	E	8.80 ±0.20	8.80 ±0.20	12.00 ±0.20	12.00 ±0.20
	F	10.30 ±0.20	14.30 ±0.30	11.50 ±0.30	16.10 ±0.30

Core Set Parameters	C1(mm ⁻¹)	0.605	0.738	0.391	0.472
	Le(mm)	37.4	45.4	46.3	55.5
	Ae(mm ²)	62.0	62.0	119.0	118.0
	Amin(mm ²)	60.8	60.8	113.1	113.1
	Ve(mm ³)	2310	2790	5490	6530
	Vmin(mm ³)	2275	2760	5230	6270
	Ac(mm ²)	61.0	61.0	113.0	113.0
	Aw(mm ²)	47.4	65.8	60.4	84.5
	W(g/set)	13.1	14.7	32	35.7

Electrical Characteristics ⁽¹⁾⁽²⁾	AL value	PL-7	3500	3000	5500	5000
		PL-9	4400	3600	6800	5600
		PL-11	3600	3100	5700	5200
		PL-13	4690	3840	7250	5970
		PL-15	3600	3100	5700	5200
	Core loss	PL-7	1.39	1.67	3.29	3.92
		PL-9	1.27	1.53	3.02	3.59
		PL-11	1.27	1.53	3.02	3.59
		PL-13	1.22	1.48	2.91	3.46
		PL-15	1.16	1.40	2.75	3.27

Note : 1) Core loss

- Unit : Watt max.
- Measuring conditions
- PL-7, PL-11, PL-15 : 100kHz, 200mT, at 100°C
- PL-9, PL-13 : 100kHz, 200mT, at 80°C
- ¹⁾ 100kHz, 100mT, at 100°C

2) AL value

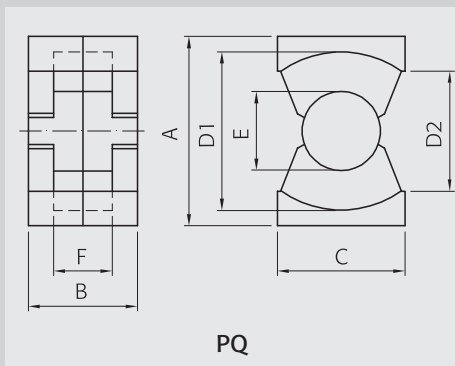
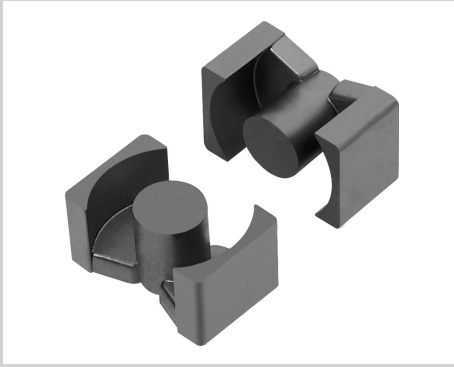
- Unit : nH/N²
- Measuring conditions : 1kHz, 0.1V, 23°C
- Tolerance : ±25%

	PQ2626S	PQ3019S	PQ3220S	PQ3225D	PQ3225S	PQ3230D	PQ3230S	PQ3535S	PQ4040S
	PQ	PQ	PQ	PQ	PQ	PQ	PQ	PQ	PQ
A	26.50 ±0.45	30.00 ±0.50	32.00 ±0.50	32.00 ±0.50	32.00 ±0.50	32.00 ±0.50	32.00 ±0.50	35.10 ±0.60	40.50 ±0.90
B	25.50 ±0.30	19.00 ±0.20	20.55 ±0.25	12.68 ±0.15	12.68 ±0.15	30.35 ±0.25	30.35 ±0.25	34.75 ±0.25	39.75 ±0.25
C	19.00 ±0.45	20.50 ±0.30	22.00 ±0.50	22.00 ±0.50	22.00 ±0.50	22.00 ±0.50	22.00 ±0.50	26.00 ±0.50	28.00 ±0.60
D1	22.50 ±0.45	25.25 ±0.35	27.50 ±0.50	27.50 ±0.50	27.50 ±0.50	27.50 ±0.50	27.50 ±0.50	32.00 ±0.50	37.00 ±0.60
D2	15.50 min.	18.50 min.	19.00 min.	20.00 min.	19.00 min.	20.00 min.	19.00 min.	23.50 min.	28.00 min.
E	12.00 ±0.20	13.30 ±0.30	13.45 ±0.25	13.45 ±0.25	13.45 ±0.25	13.45 ±0.25	13.45 ±0.25	14.35 ±0.25	14.90 ±0.30
F	17.00 ±0.30	13.00 ±0.20	11.50 ±0.30	8.15 ±0.15	8.15 ±0.15	21.30 ±0.30	21.30 ±0.30	25.00 ±0.30	29.50 ±0.30

C1(mm ⁻¹)	0.49	0.420	0.326	0.4	0.4	0.464	0.464	0.448	0.508
Le(mm)	57.1	49.8	55.5	64.6	64.6	74.6	74.6	87.9	101.9
Ae(mm ²)	116.6	117.9	170.0	161	161	161.0	161.0	196.0	201.0
Amin(mm ²)	113	117.9	142.1	142	142	142.1	142.1	161.7	174.4
Ve(mm ³)	6660	5866	9420	10400	10400	11970	11970	17260	20450
Vmin(mm ³)	6450	5866	7885	9173	9173	10599	10599	14216	17768
Ac(mm ²)	113	138.9	142.0	142	142	142.0	142.0	162.0	174.0
Aw(mm ²)	89.3	77.7	80.8	114.5	114.5	149.6	149.6	220.6	326.0
W(g/set)	35.5	32	42	49	48.9	55	57	72	94

AL value	PL-7	4300	4725	5000	4880	4880	5830	5830	5700	4200
	PL-9	5400	6300	5800	6600	6600	5000	5000	4700	5200
	PL-11	4500	3800	5200	5080	5080	3500	3500	3700	4200
	PL-13	5760	6720	6180	7040	7040	5330	5330	5010	5540
	PL-15	4500	3800	5200	5080	5080	3500	3500	3700	4200
Core loss	PL-7	4.00	3.52	5.65	6.24	6.24	7.18	7.18	10.36	12.27
	PL-9	3.66	3.23	5.18	5.72	5.72	6.58	6.58	9.49	11.25
	PL-11	3.66	3.23	5.18	5.72	5.72	6.58	6.58	9.49	11.25
	PL-13	3.53	3.11	4.99	5.51	5.51	6.34	6.34	9.15	10.84
	PL-15	3.33	2.93	4.71	5.20	5.20	5.99	5.99	8.63	10.23

PQ CORES



Part No.		PQ5050S
Type		PQ
Dimensions in mm	A	50.00 ±0.70
	B	49.95 ±0.25
	C	32.00 ±0.60
	D1	44.00 ±0.70
	D2	31.50 min.
	E	20.00 ±0.35
	F	36.10 ±0.30

Core Set Parameters	C1(mm ⁻¹)	0.346
	Le(mm)	113.0
	Ae(mm ²)	328.0
	Amin(mm ²)	314.0
	Ve(mm ³)	37240
	Vmin(mm ³)	35480
	Ac(mm ²)	314.0
	Aw(mm ²)	433.0
	W(g/set)	194

Electrical Characteristics ⁽¹⁾⁽²⁾	AL value	PL-7	6400
		PL-9	7700
		PL-11	6400
		PL-13	8210
		PL-15	6400
	Core loss	PL-7	3.70 ¹⁾
		PL-9	3.30 ¹⁾
		PL-11	3.30 ¹⁾
		PL-13	3.30 ¹⁾
		PL-15	3.07 ¹⁾

Note : 1) Core loss

- Unit : Watt max.
- Measuring conditions
- PL-7, PL-11, PL-15 : 100kHz, 200mT, at 100°C
- PL-9, PL-13 : 100kHz, 200mT, at 80°C
- ¹⁾ 100kHz, 100mT, at 100°C

2) AL value

- Unit : nH/N²
- Measuring conditions : 1kHz, 0.1V, 23°C
- Tolerance : ±25%