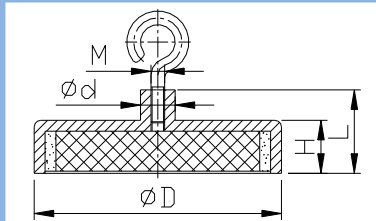


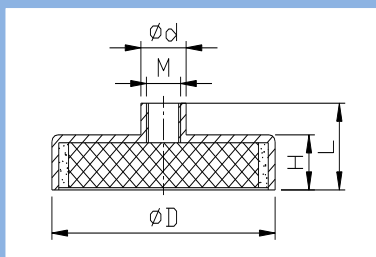
## Magnet Assemblies

### Serie TK, Ferrite, con gancio, plastica iniettata, color bianco



Art. No.	Dimensioni (mm)					U. Peso (g)	Forza Attraz. (N)
	ØD	H	L	Ød	M		
TK20	20	6	13	6	3	12	30
TK25	25	7	15	8	4	24	40
TK32	32	7	15	8	4	34	80
TK36	36	7.7	16	8	4	48	100
TK40	40	8	16.5	8	4	60	125
TK40B	40	8	18	10	5	60	125
TK47	47	9	17	8	4	90	180
TK50	50	10	18.5	8	4	110	220
TK50B	50	10	22	12	6	110	220
TK57	57	10.5	18.5	8	4	150	280
TK63	63	14	30	15	8	242	350
TK80	80	18	34	20	10	522	600
TK100	100	22	43	22	12	940	900

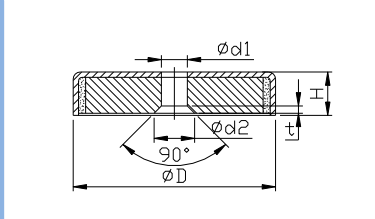
### Serie T, Ferrite, plastica iniettata, zincato



Art. No.	Dimensioni (mm)					U. Peso (g)	Forza Attraz. (N)
	ØD	H	L	Ød	M		
T20	20	6	13	6	3	11	30
T25	25	7	15	8	4	22	40
T32	32	7	15	8	4	32	80
T36	36	7.7	16	8	4	46	100
T40	40	8	16.5	8	4	58	125
T40B	40	8	18	10	5	58	125
T47	47	9	17	8	4	88	180
T50	50	10	18.5	8	4	108	220
T50B	50	10	22	12	6	108	220
T57	57	10.5	18.5	8	4	148	280
T63	63	14	30	15	8	240	350
T80	80	18	34	20	10	520	600
T100	100	22	43	22	12	940	900

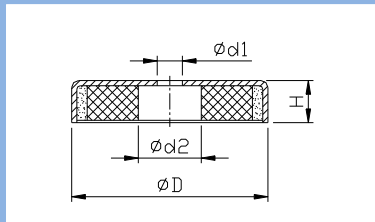
## Magnet Assemblies

### Serie F, Ferrite, plastica iniettata, zincato



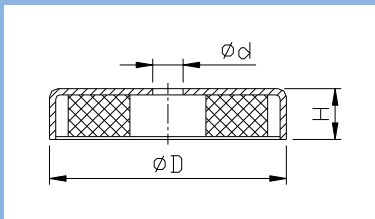
Art. No.	Dimensioni (mm)					U. Peso (g)	Forza Attraz. (N)
	ØD	H	Ød1	Ød2	t		
F16	16	4.5	3.5	6.5	1.6	4	14
F20	20	6	4.2	8.6	2.1	9	27
F25	25	7	5.5	10.4	2.5	16	36
F32	32	7	5.5	10.4	2.5	28	72
F40	40	8	5.5	10.4	2.5	54	90

### Serie R, Ferrite, plastica iniettata, zincato



Art. No.	Dimensioni (mm)				U. Peso (g)	Forza Attraz. (N)
	ØD	H	Ød1	Ød2		
R40	40	8	8.5	18	55	90
R50	50	10	8.5	22	90	180
R63	63	14	6.5	24	195	290
R80	80	18	6.5	11.5	480	540
R100	100	22	10.5	34	820	680

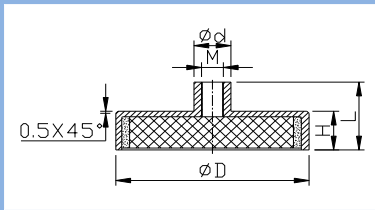
### Serie RB, Ferrite, cromato



Art. No.	Dimensioni (mm)			U. Peso (g)	Forza Attraz. (Lbs)
	ØD	H	Ød		
RB20	30.61	4.78	3.18	16	3
RB40	36.07	6.86	4.75	34	12
RB50	51.56	7.62	4.87	65	25
RB60	60.32	8.89	6.86	120	40
RB70	66.68	9.53	7.11	150	65
RB75	71.42	9.40	6.86	175	68
RB80	81.28	10.67	7.11	240	95
RB85	96.27	12.96	9.65	420	110
RB90	124.46	12.37	12.70	700	180

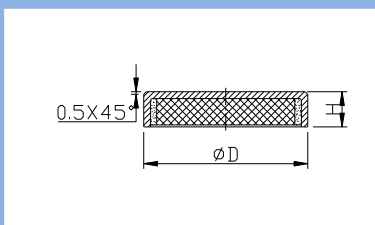
## Magnet Assemblies

### Serie TN, NdFeB, plastica iniettata, zincato



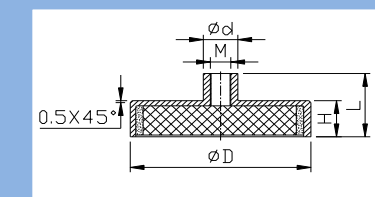
Art. No.	Dimensioni (mm)					U. Peso (g)	Forza Attraz. (N)
	ØD	H	L	Ød	M		
TN16	16	4.5	11.5	6	4	8	95
TN20	20	6	13	8	4	15	140
TN25	25	7	14	8	4	26	200
TN32	32	7	15.5	10	5	45	350

### Serie CN, NdFeB, plastica iniettata, zincato



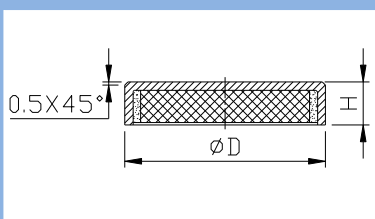
Art. No.	Dimensioni (mm)		U. Peso (g)	Forza Attraz. (N)
	ØD	H		
CN16	16	4.5	7	60
CN20	20	6	16	90
CN25	25	7	24	150
CN32	32	7	42	220

### Serie TS, SmCo, , plastica iniettata, zincato



Art. No.	Dimensioni (mm)					U. Peso (g)	Forza Attraz. (N)
	ØD	H	L	Ød	M		
TS16	16	4.5	11.5	6	4	8	60
TS20	20	6	13	8	4	15	90
TS25	25	7	14	8	4	26	150
TS32	32	7	15.5	10	5	45	220

### Serie CS, SmCo, , plastica iniettata, zincato



Art. No.	Dimensioni (mm)		U. Peso (g)	Forza Attraz. (N)
	ØD	H		
CS16	16	4.5	7	60
CS20	20	6	16	90
CS25	25	7	24	150
CS32	32	7	42	220

## Magnet Assemblies

---

